



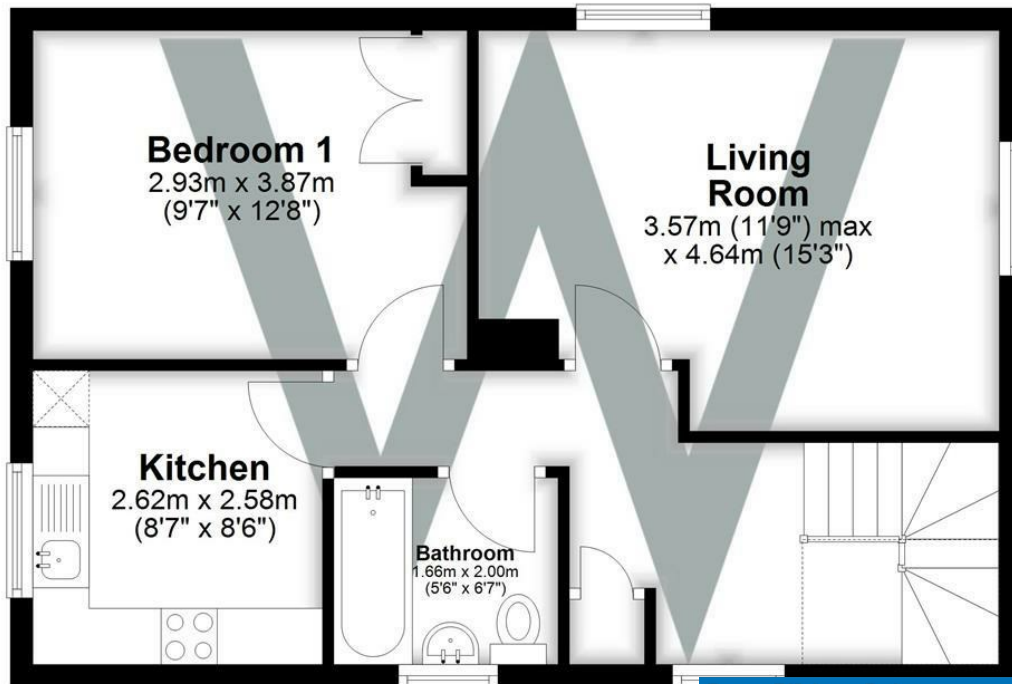
The Flat, Raglands House Church Lane, Bishopstone, Salisbury,
Wiltshire, SP5 4BF

£775 PCM

This recently renovated one-bedroom flat has undergone a full update, including a brand new kitchen, a renovated bathroom, and a fresh repaint throughout. The flat features a small entrance area with a spacious understairs storage area. Upstairs, you'll find a well-proportioned lounge with countryside views, as well as a double bedroom with a built-in double wardrobe. The newly fitted kitchen boasts a new induction cooker and white goods provided, which includes a washing machine and a free-standing fridge freezer. The bathroom has an electric shower over the bath. The property does not have gas and is heated via new electric storage heaters. Hot water is provided through an immersion heater. The property has an EPC Rating of C and is in Council Tax band A.

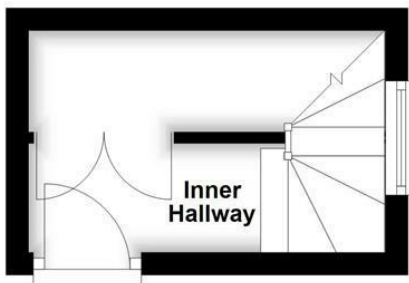
First Floor

Approx. 48.7 sq. metres (523.7 sq. feet)



Ground Floor

Approx. 6.3 sq. metres (67.7 sq. feet)



Energy Efficiency Rating

	Current	Potential
Very energy efficient - lower running costs		
(92 plus) A		
(81-91) B		
(69-80) C		
(55-68) D		
(39-54) E		
(21-38) F		
(1-20) G		
Not energy efficient - higher running costs		
	71	73
EU Directive 2002/91/EC		
England & Wales		

WHITES
Castle Chambers, 47 Castle Street,
Salisbury, Wiltshire, SP1 3SP
01722 336422
www.hwwhite.co.uk
residential-sales@hwwhite.co.uk

